

6.3000: Signal Processing

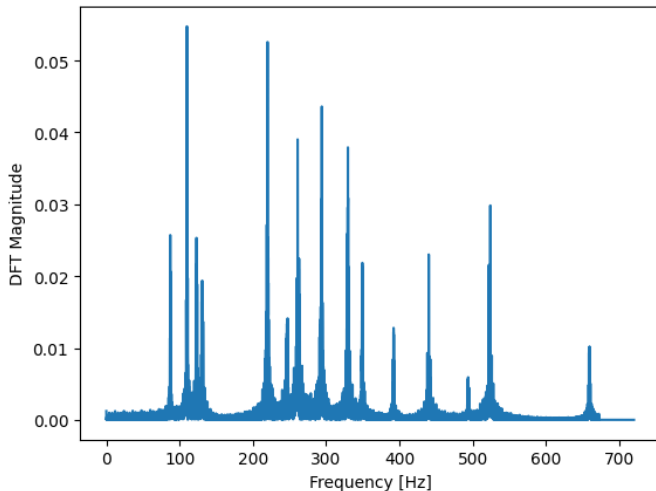
Short-Time Signal Processing

- Spectrograms
- Window Functions

October 30, 2025

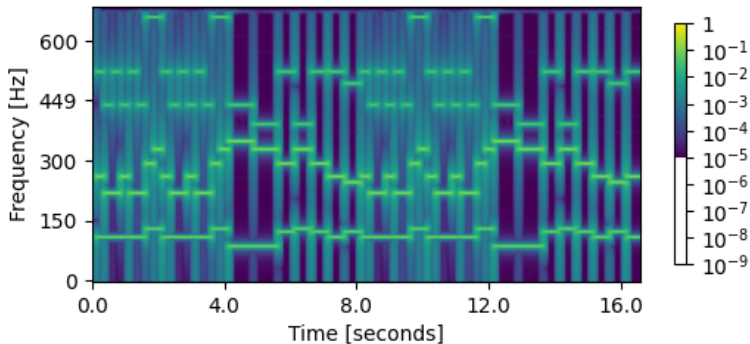
Music Clip

In lecture, we saw three representations for the same music clip. The first was the magnitude of the DFT (shown below).



Music Clip

The second was the spectrogram.

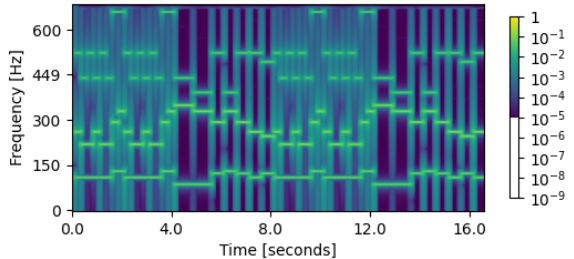
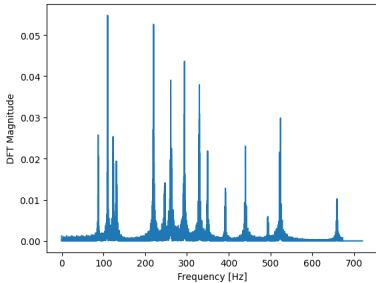


The third was the musical score.



Music Clip

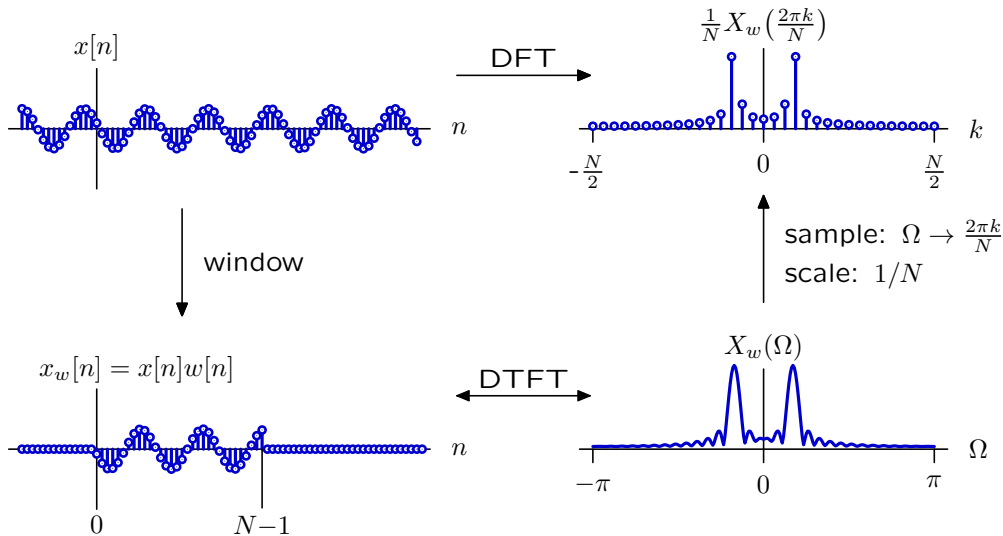
Compare features of these representations.



- What do these representations have in common?
How are they different?
- Which representation has the best frequency resolution? Why?
- Which representation has the best time resolution? Why?
- The left panel has peaks with different heights. How do the different heights in the left panel correspond to features of the spectrogram?

Window Functions

A defining feature of the DFT is its finite length N , which plays a critical role in determining both time and frequency resolution.



The finite length constraint is equivalent to multiplication by a rectangular window. What would happen if we used a different type of window?

Window Functions

Dozens of different window functions are in common use. We will look at three of them:

- rectangular window
- triangular window
- Hann window

These and other window functions have a variety of different properties. We would like to understand which properties are important in which applications.

Rectangular Window

Definition:

$$w_r[n] = \begin{cases} \frac{1}{2M-1} & 0 \leq n < 2M-1 \\ 0 & \text{otherwise} \end{cases}$$

- Make a plot of $w_r[n]$ versus n .
- Determine the DT Fourier Transform $W_r(\Omega)$.
- Make a plot of $W_r(\Omega)$ versus Ω .

Triangular Window

Definition:

$$w_t[n] = \begin{cases} \frac{n+1}{M^2} & \text{if } 0 \leq n < M \\ \frac{2M-n-1}{M^2} & \text{if } M \leq n < 2M-1 \\ 0 & \text{otherwise} \end{cases}$$

- Make a plot of $w_t[n]$ versus n .
- Determine the DT Fourier Transform $W_t(\Omega)$.
- Make a plot of $W_t(\Omega)$ versus Ω .

Hann Window

Definition:

$$w_h[n] = \begin{cases} \frac{1}{5} \sin^2 \left(\frac{\pi * (n+1)}{2M-1} \right) & 0 \leq n < 2M - 1 \\ 0 & \text{otherwise} \end{cases}$$

- Make a plot of $w_h[n]$ versus n .
- Determine the DT Fourier Transform $W_h(\Omega)$.
- Make a plot of $W_h(\Omega)$ versus Ω .

Compare

Superpose the plots of $W_r(\Omega)$, $W_t(\Omega)$, and $W_h(\Omega)$.

What are the important differences?